

V200 and V210 Kent range of domestic volumetric cold water meters

The meters that give you more



V200 and V210 Volumetric cold water meters

Manufacturing water meters for utility, commercial and domestic applications, Elster Metering Limited is the world's leading manufacturer of integrated metering, offering solutions for revenue metering, cost allocation, network monitoring, distribution and industrial applications. V200 and V210 volumetric meters are designed to maximise revenue collection and both are available in a range of sizes covering a wide range of flow rates.

Key features

- Simple to link with Emeris radio technology
- Performance exceeds ISO4064 Class D standard
- Detection of extremely low flows
- Precision calibrated assembly method
- Maximised revenue collection by innovative design
- Volumetric design permits optimum performance in horizontal, vertical or inclined pipelines
- Proven grooved piston for excellent durability and reduced blockages
- Hermetically sealed copper can register with glass lens, providing conformity to IP68

Innovative communication

As the demand for remote metering increases the V200/V210 offers a range of communication options for every utility company. Incorporating an inductive pulse target which can be read by a tamper-proof, bi-directional inductive pulse transmitter, the V200/V210 is easily integrated into a remote reading system by simply adding the relevant module. The bi-directional inductive pulser monitors the flow of water and is self-powered for years of reliable use.

The V200/V210 can also be fitted with the revolutionary new InVISION register module to provide an encoded output. InVISION works by using Optical Character Recognition (OCR) technology to 'read' the numbers on the wheels of the register, the many benefits of which include:

- Absolute reading
- Zero contact, zero friction, virtually 100% accuracy
- Easy retro-fitting

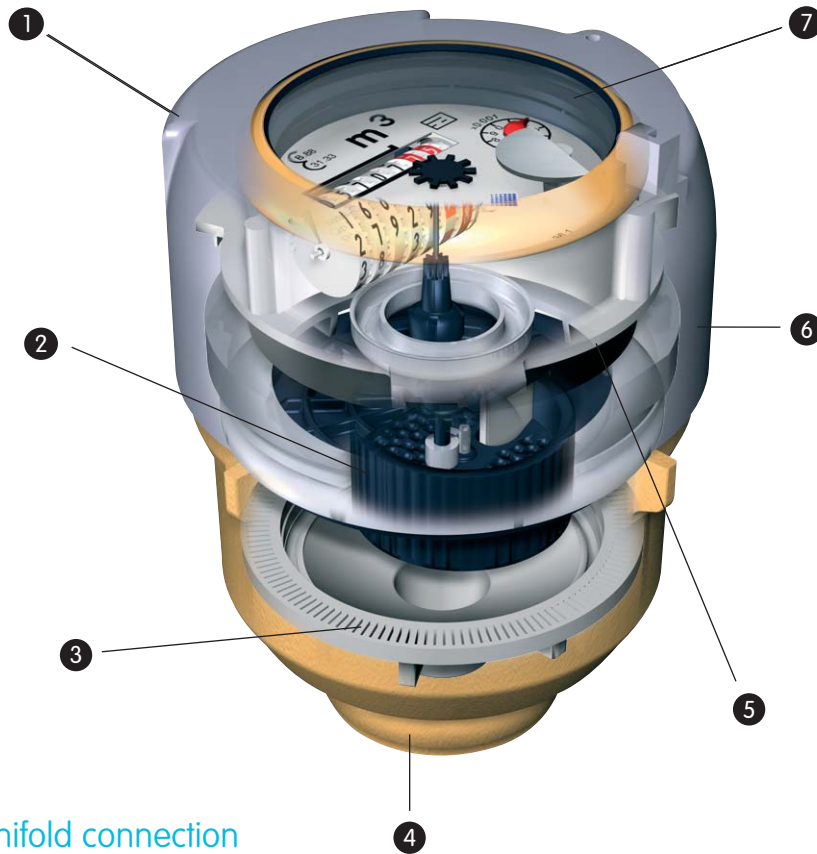
Outstanding accuracy and long-term performance

V200 and V210 meters are designed to give long, trouble-free working life, with excellent features such as the proven grooved piston design. The action of this piston creates flow eddies in the grooves which hold solids in suspension until flushed out, reducing the possibility of meter stoppages. The V200/V210 meters offer the lowest headloss when compared to competitors' meters reducing network leakage operational costs. It's volumetric design permits optimum performance in horizontal, vertical or inclined pipelines.

Register and shroud

The easy-to-read, hermetically sealed copper can register has a 10-year proven track record. Tamper-proof registers are sealed to eliminate condensation and waterproofing, and offer conformity to IP68.

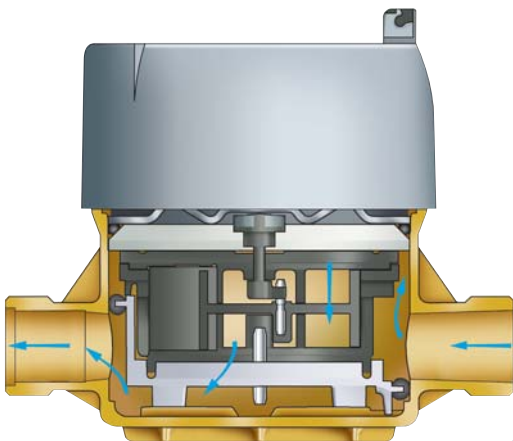




V210 meter manifold connection

- 1 Pre-equipped with inductive pulse target allowing integration into remote reading systems
- 2 Grooved piston design gives long working life and reduces blockages
- 3 Filter design improves flow and reduces headloss
- 4 Compact, easy-to-handle and robust body
- 5 Pressure plate with 'O' ring seal to ensure no unmetered bypass
- 6 Tamper-proof snap fit shroud
- 7 Hermetically sealed copper can register with glass lens, providing conformity to IP68

V200 meter in-line connection



About Elster Group

A world leader in advanced metering infrastructure, integrated metering, and utilisation solutions to the gas, electricity and water industries, Elster's systems and solutions reflect over 170 years of knowledge and experience in measuring precious resources and energy. Elster provides solutions and advanced technologies to help utilities more easily, efficiently and reliably obtain and use advanced metering intelligence to improve customer service, enhance operational efficiency, and increase customer benefits. Elster's AMI solutions enable utilities to cost-effectively deliver, manage, and conserve the life-essential resources of gas, electricity, and water. Elster has over 7500 staff and operations in 38 countries in North and South America, Europe, and Asia.

For additional information, visit www.elster.com

WEEE producer identification number:
WEE/EJ0221XT/PRO

Elster Metering Limited
130 Camford Way
Sundon Park
Luton
Bedfordshire
LU3 3AN
United Kingdom
T: +44 (0)1582 846400
F: +44 (0)1582 564728
water.metering@gb.elster.com
www.elstermetering.com

Copyright © 2008 Elster Group
All rights reserved.
No part of the publication may be reproduced in any material form without the written permission of the Elster Group except in accordance with the provisions of the Copyright, Designs and Patents Act 1988.

The Company's policy is one of continuous improvement and the right is reserved to modify the specifications without notice.